



56th International Cadet Australian Championship

27th December 2017 – 4th January 2018

Metung Yacht Club

115 Metung Rd, Metung, Victoria



SAILING INSTRUCTIONS

1. RULES

- 1.1. The Regatta will be governed by the current *Rules* as defined in the Racing Rules of Sailing (RRS).
- 1.2. The prescriptions and special regulations Part 2 for Off the Beach Boats of Australian Sailing (AS) shall apply
- 1.3. The International Cadet Class Rules shall apply.
- 1.4. Where there is a conflict between the Notice of Race and the Sailing Instructions the Sailing Instructions shall prevail.

2. NOTICES TO COMPETITORS

Notices to competitors will be posted on the Official Notice Board located downstairs at the Metung Yacht Club.

3. CHANGES TO SAILING INSTRUCTIONS

Any change to the sailing instructions will be posted before 1100 hours on the day it will take effect, except that any change to the schedule of races will be posted by 1800 on the day before it will take effect.

4. SIGNALS MADE ASHORE

- 4.1 Signals made ashore will be displayed on the Metung Yacht Club Flagpole.
- 4.2 When flag AP is displayed ashore, '1 minute' is replaced with 'not less than 30 minutes' in the race signal AP.

5. SCHEDULE

- 5.1 Schedule:

Program	Day / Date	Time / Warning Signal
Registration/Measurement Welcome Ceremony	27 th December	0900 – 1600 * 1700
Registration/Measurement Invitation Race	28 th December	0900 – 1130 1355
Championship Racing	29 th December	1330
Resail (if required) Championship Racing	30 st December	1030 1330
Resail (if required) Championship Racing	31 st December	1030 1330
Reserve Day	1 st January	
Resail (if required) Championship Racing	2 nd January	1030 1330
Resail (if required) Championship Racing	3 rd January	1030 1330
Championship Racing	4 th January	1030

* Please note change of time from NOR

- 5.2 Up to 12 Championship Races are scheduled.
- 5.3 There will be no more than 2 races back to back and no more than 3 races on one day.
- 5.4 To alert boats that a race or sequence of races will begin soon, the orange starting line flag will be displayed with one sound for at least 5 minutes before a warning signal is displayed.
- 5.5 On the last day of the regatta no warning signal will be made after 1500.

6. CLASS FLAGS

The Class flag will be a black "C" on a white background.

7. RACING AREAS

Attachment A shows the approximate location of the racing areas.

8. THE COURSES

- 8.1 The diagrams in Attachment B show the courses, the order in which marks are to be passed, and the side on which each mark is to be left.
- 8.2 No later than the warning signal, the race committee boat will display the course to be sailed.
- 8.3 Where a Course indicates a gate and one of the gate marks is missing then the remaining mark shall be rounded to port.

9. MARKS

- 9.1 Marks 1, 2, 2a, 2b and 3 will be orange cylindrical marks. Mark 1a will be an orange pencil mark.
- 9.3 New marks, as provided in instruction 11, will be orange with black band cylindrical marks.
- 9.4 The starting marks will be the race committee signal boat displaying an orange flag and a yellow mark.
- 9.5 The finish marks will be a race committee signal boat displaying a blue flag and a yellow mark.

10. THE START

- 10.1 Races will be started by using Rule 26 with the warning signal made 5 minutes before the starting signal.
- 10.2 The starting line will be as described in SI 9.4.
- 10.3 A boat starting later than 5 minutes after her starting signal will be scored 'Did Not Start' without a hearing. This changes Rule A4.

11. CHANGE OF THE NEXT LEG OF THE COURSE

To change the next leg of the course, the race committee will lay a new mark (or move the finishing line) and remove the original mark as soon as practicable. When in a subsequent change, a new mark is replaced, it will be replaced by an original mark.

12. THE FINISH

The finishing line will be as described in SI 9.5.

13. PENALTY SYSTEM

- 13.1 Appendix P shall apply, changed as follows: P2.3 is deleted and the words "or subsequent" are added after the word "second" in P2.2.

14. TIME LIMITS AND TARGET TIMES

- 14.1 The Target time for the first boat to sail the course shall be 50 minutes. Failure to meet the target time will not be grounds for redress. This changes Rule 62.1(a).
- 14.2 If no boat has passed Mark 1 within 20 minutes from the starting signal the race will be abandoned.
- 14.3 The time limit for the first boat to sail the course shall be 90 minutes.
- 14.4 Boats failing to finish within 30 minutes after the first boat sails the course and finishes will be scored 'Did Not Finish' without a hearing. This changes Rules 35, A4 and A5.

15. PROTESTS AND REQUESTS FOR REDRESS

- 15.1 Protest forms are available at the race office, located in the downstairs area. Protests and requests for redress or reopening shall be delivered there within the appropriate time limit.
- 15.2 The protest time limit is 60 minutes after the last boat has finished the last race of the day.

- 15.3 Notices will be posted no later than 30 minutes after the protest time limit to inform competitors of hearings in which they are parties or named as witnesses. Hearings will be held in the protest room beginning at the time posted.
- 15.4 Notices of protests by the race committee or protest committee will be posted to inform boats under Rule 61.1(b).
- 15.5 A list of boats that, under instruction 13.1, have been penalised for breaking Rule 42 will be posted.
- 15.6 Breaches of instructions 10.3, 18, 21, 23 and 24 will not be grounds for a protest by a boat. This changes Rule 60.1(a). Penalties for these breaches may be less than disqualification if the protest committee so decides. The scoring abbreviation for a discretionary penalty imposed under this instruction will be DPI.
- 15.7 On the last scheduled day of racing a request for reopening a hearing shall be delivered:
- (a) within the protest time limit if the requesting party was informed of the decision on the previous day;
 - (b) no later than 30 minutes after the requesting party was informed of the decision on that day.
- This changes Rule 66.
- 15.8 On the last scheduled day of racing a request for redress based on a protest committee decision shall be delivered no later than 30 minutes after the decision was posted. This changes Rule 62.2.

16. ARBITRATION

- 16.1 Appendix T of the RRS will apply

17. SCORING

- 17.1 Five (5) races are required to be completed to constitute a series.
- 17.2 (a) When six (6) or fewer have been completed, a boat's series score will be the total of her race scores.
- (b) When seven (7) races have been completed and scored, a boat's series score will be the total of her race scores excluding her worst score.
- (c) When ten (10) or more races have been completed, a boat's series score will be the total of her race scores excluding her two worst scores.
- 17.3 A boat's handicap rating will be calculated based on results in the first three championship races.
- 17.4 Failure to sign on shall result in that boat being penalised five points for the first race of the session (but not worse than DNF). Failure to sign off shall result in that boat being penalised five points for the last race of the session (but not worse than DNF). Penalties will be applied without a hearing. This changes RRS 63.1.

18. SAFETY REGULATIONS

- 18.1 All boats intending to race shall sign on by removing their numbered "tag" from the sign on board and attaching it to their person or boat before going afloat. On returning to shore, boats shall sign off by placing their numbered "tag" back on to the sign on board promptly but before the end of protest time limit.
- 18.2 Failure to Sign on or Sign off will result in a penalty as described in SI 17.4
- 18.3 Discretionary penalties will apply to Rule 41 "Outside Help". Actions of the Race Committee in retrieving crews from the water and returning them to their boats may not be penalised, at the discretion of the Protest Committee.
- 18.4 A boat that retires from a race shall notify the race committee as soon as possible.

19. REPLACEMENT OF CREW OR EQUIPMENT

- 19.1 Substitution of crew will not be allowed without prior written approval of the race committee. The nominated Helm shall not be substituted.
- 19.2 Substitution of equipment will not be allowed without prior written approval of the race committee, unless damaged equipment is replaced on the water, where approval shall be sought before the end of Protest Time Limit for that day.
- 19.3 Requests for substitution shall be made on forms available at the race office.

20. EQUIPMENT AND MEASUREMENT CHECKS

A boat or equipment may be inspected at any time for compliance with the class rules and sailing instructions.

21. EVENT ADVERTISING

Competitors will be required to display bow numbers and, if applicable, the event sponsor's logo. These will be provided by the organising authority at registration. The forward edge of the bow numbers shall be affixed no more than 200mm from the bow of the boat on each side. The top edge shall be no lower than 50mm from the deck of the boat.

22. OFFICIAL BOATS

Official boats will be marked with the Metung Yacht Club Burgee.

23. SUPPORT BOATS

- 23.1 Team leaders, coaches and other support personnel shall stay outside areas where boats are racing from the time of the preparatory signal until all boats have finished or retired or the race committee signals a postponement, general recall or abandonment.
- 23.2 All support and coach boats shall position themselves at least 50 metres below the start line and beyond the lay-lines of the race course whilst racing is in progress, and shall move in such a fashion as to ensure their wake does not affect the boats racing.
- 23.3 Support boats shall be marked with a provided white flag marked with a designated number.
- 23.4 In emergency situations, all support and coach boats may be called upon and come under the direction of the race committee.
- 23.5 When Code Flag V (with a long sound signal) is displayed on a committee vessel all support boats are required to remain afloat and assist all sailors until Code Flag V is lowered.
- 23.6 All vessels to monitor designated VHF radio channel at all times.

24. TRASH DISPOSAL

Trash may be placed aboard support and race committee boats.

25. RADIO COMMUNICATION

Except in an emergency, a boat shall neither make radio transmissions while racing nor receive radio communications not available to all boats. This restriction also applies to mobile telephones or any other electronic communication devices.

26. PRIZES

26.1 Prizes will be awarded as described below:

- The Jock Sturrock Trophy for the Australian Champion (Perpetual);
- The Mermaid Trophy for the First Girl Helm (Perpetual);
- The Hutton Family Trophy for the First Boy Helm (Perpetual);
- The Tillet Team Trophy for the winning State Team;
- First Boy Crew (the Colin Pratt Perpetual Trophy);
- First Girl Crew (the TAK Chemicals Perpetual Trophy);
- The Harry Richards Trophy for the Most Determined (Perpetual);
- The highest-placed skipper on Line Honours helming their first Nationals;
- The highest-placed skipper on Line Honours under the age of 12;
- The highest-placed skipper on Line Honours under the age of 14;
- The highest-placed skipper on Line Honours under the age of 16;
- To the second to tenth-placed skipper and crew on Line Honours;
- To the first to third-placed skipper and crew on Handicap;
- To the top three place-getters on Line Honours in each Race;
- The Redlands Trophy for the First Co-Ed Helm and Crew Combination (Perpetual).

26.2 Winners of outright Prizes will not be eligible to win Handicap Prizes. Other prizes may be awarded by the organising authority.

27. DISCLAIMER OF LIABILITY

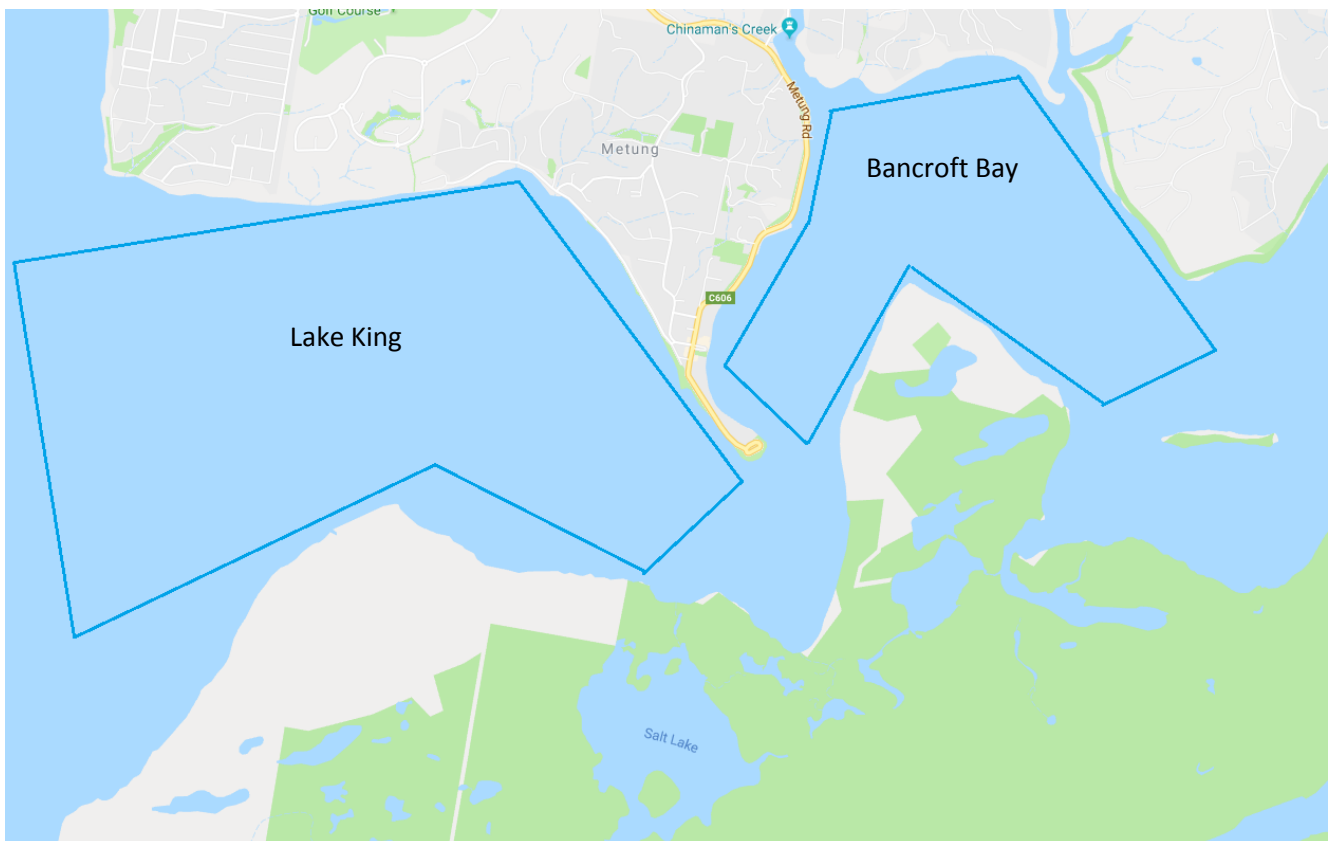
27.1 Competitors participate in the regatta entirely at their own risk. See Rule 4, Decision to Race.

27.2 The organising authority will not accept any liability for material damage or personal injury or death sustained in conjunction with or prior to, during, or after the regatta.

28. INSURANCE

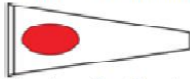
Each participating boat shall be insured with valid third-party liability insurance with a minimum cover of AUD5Mil (AUD10Mil recommended) or the equivalent. All owners/competitors who enter this event are deemed to have made a declaration that they hold such cover.

ATTACHMENT A

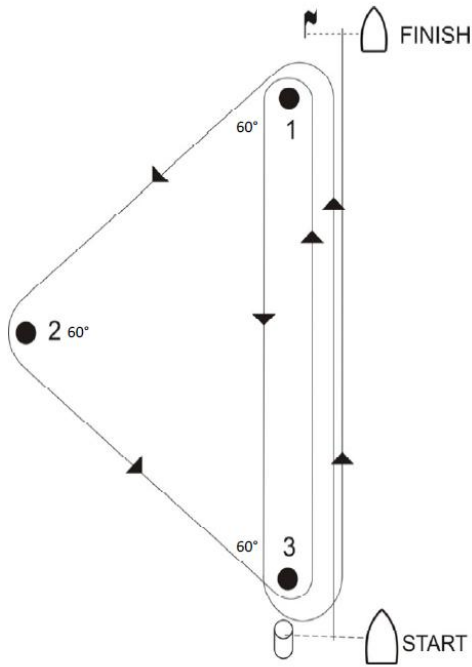


ATTACHMENT B

Course 1: Numeral Pennant 1



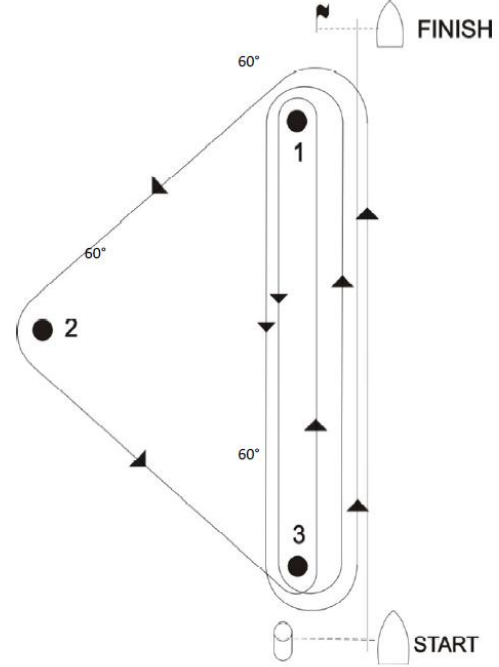
S-1-2-3-1-3-F



Course 2: Numeral Pennant 2

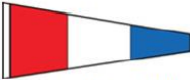


S-1-2-3-1-3-1-3-F

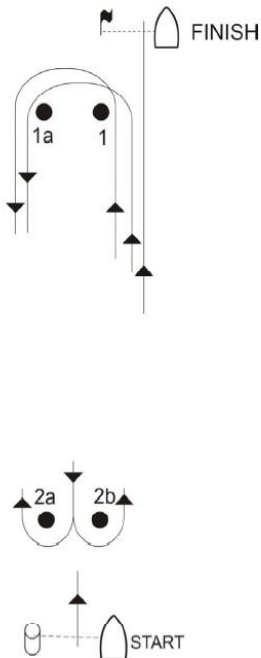


Course angles are approximate

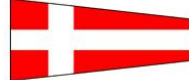
Course 3: Numeral Pennant 3



S-1-1a-2a/b-1-1a-2a/b-F



Course 4: Numeral Pennant 4



S-1-2-3-1-F

