



Metung Yacht Club
SAILING
INSTRUCTIONS

Sailing Season 2021 – 2022

Division 1, Division 2, Division 3 & Division 4.

The Organising Authority is Metung Yacht Club Inc.

1 RULES

- 1.1 The racing will be governed by the rules as defined in *The Racing Rules of Sailing*.
- 1.2 The Prescriptions and Special Regulations of Australian Sailing will apply.
- 1.3 The MYC Handicap Rules 2021 - 2022 will apply.
- 1.4 Class rules will apply where boats are racing as a class.

2 SAFETY REQUIREMENTS

- 2.1 The safety category for all races is Cat 7.
- 2.2 All crew shall wear a lifejacket complying with Type 1 or Type 2 standard at all times while afloat, between signing on and signing off.
(This changes Rule 1.2 and AS Special Regulation Part 1, 5.01.1)
- 2.3 All boats shall carry an operating VHF radio and keep a listening watch on VHF 72 at all times whilst racing.
(This changes AS Special Regulation Part 1, 3.25).
- 2.4 Navigation lights shall be carried for the Milsonia Cup (Wattle Point race).
(Special Regulation 3.23.2 and 3.23.3 and 3.23.4)
- 2.5 Race Entry/Sign On / Sign Off
 - (a) All boats must complete a radio check with the Race Officer on VHF channel 72 prior to the Warning Signal.
 - (b) The Skipper shall **sign on** before going to the racing area by completing a sign on form **at** the Club House not later than 30 minutes before the start.
 - (c) Boats entered for Division 1 may elect to start with the Division 2 boats. This election is the Skipper's choice, and any such change must be declared at Sign-On. As a guide boats with a MYC Performance Handicap less than 0.88 may elect to take advantage of the earlier start time, and still be part of Division 1.
 - (d) Division 4 boats intending to fly a spinnaker shall make such declaration on the Sign On

sheet, and shall start 10 mins later than their allocated start time.

- (e) Crew changes can be made prior to the Warning Signal and can be notified by radio to the Race Officer. Such notifications must be acknowledged.
- (f) The Skipper (or a crew member nominated by the Skipper) shall **sign off** within 90 minutes after the completion of the last race of the day. The sign-off may be made by radio or phone, and must be acknowledged by the Race Officer. MYC Bar 03-51562315.

2.6 **A boat that retires from the race shall notify the race committee as soon as possible.**

3 NOTICES TO COMPETITORS

Notices to competitors will be posted on the upstairs Notice Board of the Club House. They will also be posted on the website time permitting.

4 CHANGES TO SAILING INSTRUCTIONS

Any change to the sailing instructions will be posted before 0900hrs on the day it will take effect, except that any change to the schedule of races will be posted by 2000hrs one week before it will take effect.

5 SIGNALS MADE ASHORE

Signals made ashore will be displayed from the signal mast in front of the Club House. When flag AP is displayed ashore, '1 minute' is replaced with 'not less than 30 minutes' in the race signal AP.

6 SCHEDULE OF RACES

The schedule of races is as set out in the Notice of Race (NOR) for each event or series conducted during the season and the Club Sailing Calendar 2021-2022.

7 CLASS FLAGS

Division 1	Code Flag V
Division 2	Code Flag G
Division 3 (Classic Wooden Boats)	Code Flag R
Division 4 (Twilights)	No Code Flag

8 RACING AREAS

The racing area will include Bancroft Bay, Reeves Channel, Lake King, McMillan Strait, Lake Victoria and Loch Sport.

9 THE COURSES

(a). The Metung Yacht Club Sailing Course Booklet 2021-2022 contains the courses (Attachment A), including the approximate angles between legs, the order in which marks are to be passed, and the side on which each mark is to be left. The diagrams are a guide only and must be read in conjunction with the relevant course description.

(b). The Course number to be sailed will be indicated at the Club House prior to the commencement of the race or on the start boat.

(c). The Division 3 (Classic Wooden Boats), and Division 4 (Twilights) events will decide on their course prior to starting and may vary from that shown in the Course Booklet. The course will be drawn on the notice board on the upper level of the clubhouse.

10 MARKS

- 10.1 The Course Marks will be orange conical buoys as shown in the course diagrams.
- 10.2 The starting and finishing marks will be as described in 11.5(b), 11.6(b), 14.1 and 14.2.
- 10.3 Gate marks will be a pair of large cylindrical yellow buoys.
- 10.4 Competitors are to remain **on the Channel side** of all navigation marks.

11 THE START

- 11.1 Races may be started from the Metung Yacht Club – ‘**Club Starts**’ or from a race committee boat – ‘**Boat Starts**’.

Division 1 will start 15 minutes after Division 2 for Club Starts and 10 minutes later for Boat Starts, (unless indicated otherwise in the Sailing Calendar). This applies to any postponement or General Recall of the Division 2 start. Any Division 1 boat may elect to start with the Division 2 boats, but still be part of the Division 1 event. It is anticipated that boats with a MYC Performance handicap less than 0.88 may elect to take advantage of the earlier start. Such an election needs to be made at Sign-on for each race.

- 11.2 Divisions 3 and 4 races will be Stern Chaser starts.
- 11.3 **Stern Chaser** boats will be allocated a provisional start time when entering, and confirmed with the boat’s radio check. The time given with the radio check is the time to be used. Attention is drawn to SI 2.5 (d) for Division 4 boats intending to fly a spinnaker. In the event of failure of the lights, boats shall start at the time in minutes indicated by their allocated handicap, relative to the scheduled time for the race start. (*This changes RRS 26*). Start signal information may also be broadcast on VHF channel 72.
- 11.4 A boat starting later than 10 minutes after her starting signal will be scored **Did Not Start** without a hearing (this changes Rule 63.1).

11.5 Club Starts

- (a) Races will be started using Rule 26 except that the visual signals will be made with white lights on the Club House as follows.

Warning	Minutes before Starting Signal	Sound	White	White	White
Warning	5	1	on	on	on
Preparatory	4	1	on	on	
One-minute	1	1	on		
Start	0	1			
Individual recall		1			on

General recall	2	on	on
Postponement	2	on	on

- (b) The starting line for Club starts will be between the black and white pole on the outer wall of the marina and the yellow 5-knot buoy in front of the Club House.
- (c) After an Individual or General Recall boats must return to the pre-start side of the starting line **around the end, NOT through the start line.**
- (d) After a General Recall the two signal lights will be turned off **one minute before** the Warning Signal for the restart.
- (e) After a Postponement the two signal lights will be turned off **one minute before** the Warning Signal for the restart.

11.6 Boat Starts

- (a) Races will be started using *Rule 26*.
- (b) The starting line will be between a staff displaying an orange flag on the Race Committee boat at the starboard end and the port-end starting mark (*pin*).
- (c) No later than the warning signal, the race committee may display the approximate compass bearing of the first leg.
- (d) After a long postponement, to alert boats that a race or sequence of races will begin soon, an orange flag will be displayed with one sound five minutes before a warning signal is displayed.

12 CHANGING THE NEXT LEG OF THE COURSE

- 12.1 A change to the next leg of the course will be in accordance with *Rule 33*.

13 SHORTEN COURSE

- 13.1 Boat starts for Division 1 and 2 courses will be shortened in accordance with *Rule 32.2*
- 13.2 Clubs starts for Division 1 and 2 courses will be shortened by one of two ways

- a) a mark boat flying the code **flag S** within the vicinity of a mark,
OR
- b) an announcement broadcast on **VHF channel 72**.

Boats shall continue to sail the course to that mark then proceed from that mark directly back to the Club House finishing line.

- 13.3 For Division 3 boats, the shorten course signal will only be broadcast on VHF Channel 72. Following the Shorten Course signal, boats shall continue to sail the course to the mark that lies ahead of the leading boat. The Finish Line is abeam that mark, on the required side. Finishing places are awarded to each boat as they reach that mark. No finishing times will be recorded.
- 13.4 For Division 4 boats, the shorten course will be managed exactly the same as the standard

finish detailed in 14.3 below.

14 THE FINISH

14.1 Club Finish

The finishing line will be between the black and white pole on the outer wall of the marina and the yellow 5-knot buoy in front of the Club House.

14.2 Boat Finish

The finishing line will be between a staff displaying a blue flag on the committee vessel and the course side of the finishing mark.

14.3 Division 4 Finish

For Division 4 boats, there is no predetermined Finish Line. Boats will continue sailing the published course until the Race Officer states which Mark of the course will become the Finish Mark. The Finish Line is abeam that mark, on the required side. The Race Officer is targeting 90 minutes from the first boat's Start Signal. This signal will only be broadcast on VHF Channel 72. The Race Officer will name the Mark lying ahead of the leading boat or boats. Boats shall radio their finishing place to the Race Officer.

15 PENALTY SYSTEM (*change to Rule 44.1*).

15.1 Two-Turns Penalty is replaced by a One-Turn Penalty.

16 TIME LIMITS AND TARGET TIMES (*Rule 35 is changed as follows*)

16.1 The time limit for Division 1, 2 and 3 races, other than the ones stated in 16.2 and 16.3 below is 3 hours.

16.2 Boats failing to finish within the time limit or 60 minutes after the first boat sails the course and finishes, whichever is the longer, will be scored DNF without a hearing.

16.3 For the Wattle Point and Raymond Island races, boats failing to finish before local sunset will be scored DNF without a hearing.

16.4 For Division 4 (Twilight) races, boats failing to finish before local sunset will be scored DNF without a hearing. See also 13.4 for target times and Finishing details.

17 PROTESTS AND REQUESTS FOR REDRESS

17.1 Protest forms are available at the Club House. Protests and requests for redress or reopening shall be delivered to the Race Officer within the appropriate time limit.

17.2 The protest time limit is 60 minutes after the last boat has finished the last race of the day.

17.3 Protests will be heard from 1800hrs on the Wednesday following the race.

18 EQUIPMENT AND MEASUREMENT CHECKS

- 18.1 A boat or equipment may be inspected at any time for compliance with the eligibility criteria in the Notice of Race and these Sailing Instructions. Boats not complying may receive a warning prior to disqualification.

19 TRASH DISPOSAL

- 19.1 Competitors shall not put trash in the water. Trash shall be brought ashore and disposed of responsibly.

20 RADIO COMMUNICATION

- 20.1 Except in an emergency and radio check in accordance with clause 2.5 (a), a boat shall not make radio transmissions while racing nor receive radio communications not available to all boats. This restriction also applies to mobile telephones (*Rule 41*).
- 20.2 Boats shall keep a listening watch on VHF channel 72 for communications from the Race Committee.

21 PRIZES

- 21.1 Prizes will be given as described in the Notice of Race for the respective series.

22 DISCLAIMER OF LIABILITY.

- 22.1 Attention is drawn to RRS 3 Decision to Race. Competitors participate in MYC events entirely at their own risk. The organizing authority will not accept any liability for material damage or personal injury, or death sustained in conjunction with or prior to, during or after the events.

23 INSURANCE

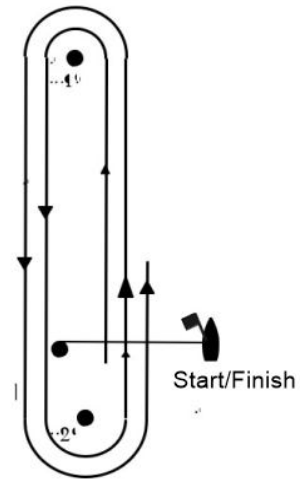
- 23.1 Each participating boat shall be insured with valid third-party liability insurance with a minimum cover of \$10,000,000.

Attachment A - COURSES 2021-2022

Course 1

Start – 1 – 2 – start / finish line – 1 – 2 – Finish

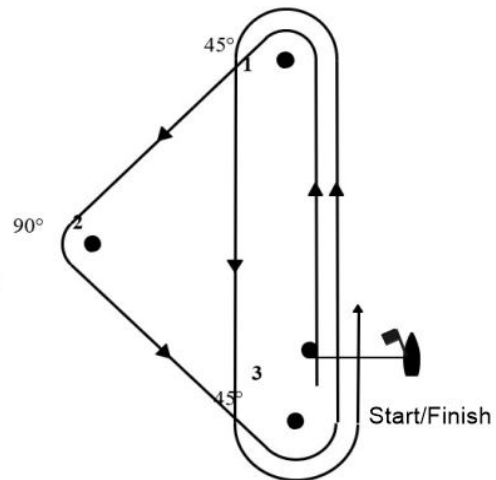
Distance from mark 2 to mark 1 is approximately 1.8 nm



Course 2

Start – 1 – 2 – 3 start / finish line – 1 – 3 – Finish

Distance from mark 2 to mark 1 is approximately 1.8 nm

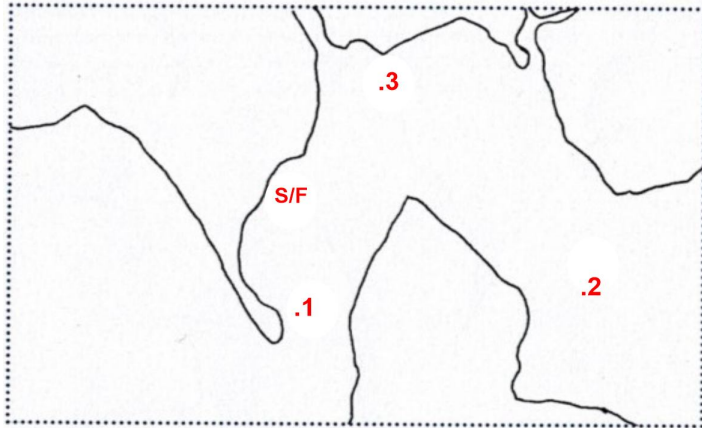


Course 3

Start - 1 - 2 - 3 - 2 - 3 - 2 - 3 - Finish

All marks to port.

Southerly Wind

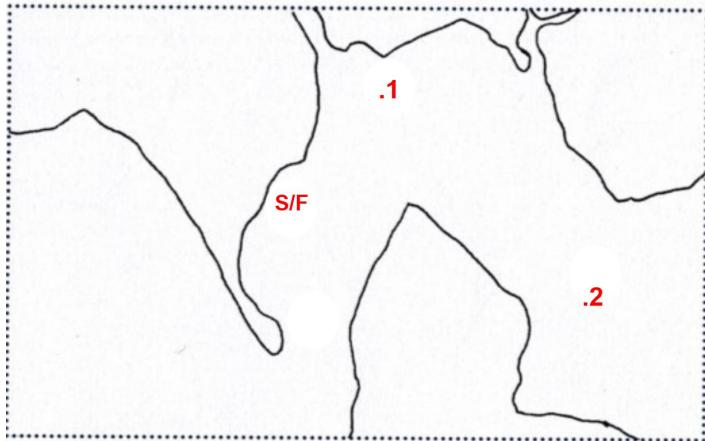


Course 4

Start - 1 - 2 - 1 - 2 - 1 - Finish

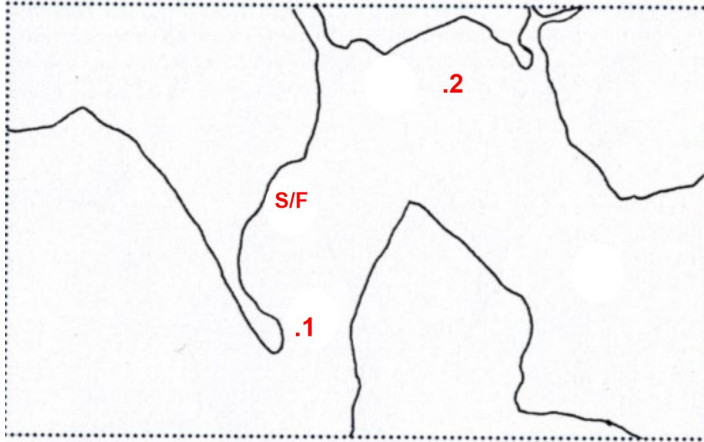
Mark 1 to starboard (first time only) then all marks to port.

Easterly Wind



Course 5

Start - 1 - 2 - 1 - 2 - Finish
All marks to port.



Course 6

Start - 1 - 2 - 1 - 2 - 1 - 2 - Finish
All marks to port.



Course 7

Start - 1 - 2 - 1 - 2 - 1 - 2 - Finish
All marks to port.



Course 8

Start – 1 - 2 - 1 - 2 – 1 - 2 – Finish

All marks to port.

Marks 2 and 3 will be located on the circumference of a circle approx. 9nm diameter between Tambo Bluff and Luderick Point, in the arcs shown depending upon the wind direction. The bearing from mark 2 to mark 3 may be broadcast by the race committee.



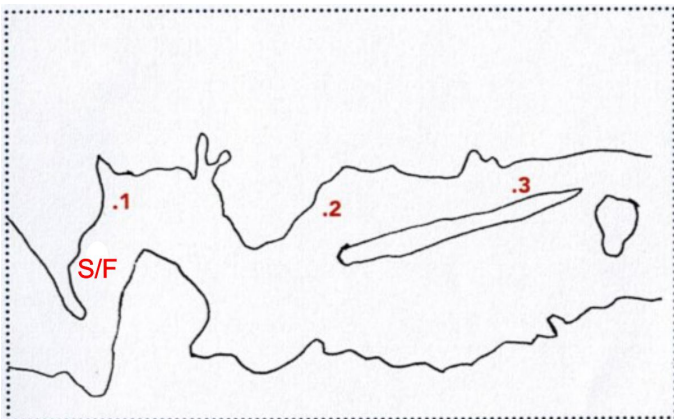
Course 9

Start – 1 – 3 – 2 – 3 – 2 – 3 - Finish

Mark 1 to starboard – all other marks to port.

Note:

1. Mark 1 will be laid in the area between the Club start and Chinaman's Creek
2. Marks 2 and 3 will be laid approximately 1nm apart so that the direction of them is as close as possible to windward/leeward.
3. Mark 1 is to be rounded to starboard, all other marks are to be rounded to port.



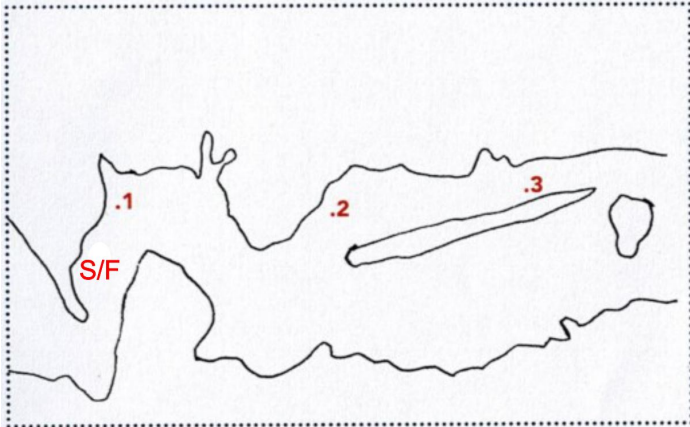
Course 10

Start – 1 – 3 – 2 – 3 - Finish

Mark 1 to starboard – all other marks to port.

Note:

1. Mark 1 will be laid in the area between the Club start and Chinaman's Creek
2. Marks 2 and 3 will be laid approximately 1nm apart so that the direction of them is as close as possible to windward/leeward.
3. Mark 1 is to be rounded to starboard, all other marks are to be rounded to port.



Course 11 (CWB)

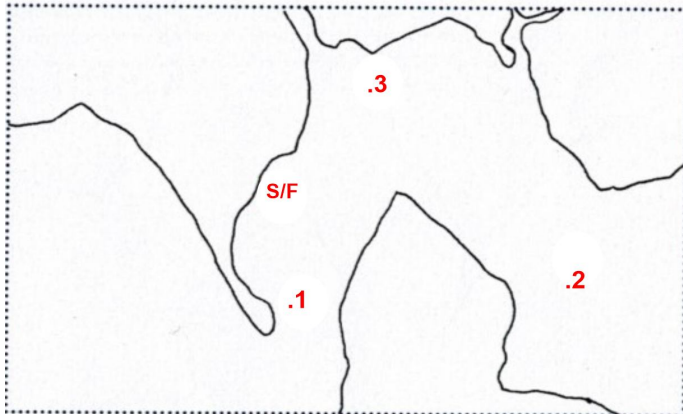
Start – 1 – 2 – 3 – S – 1 – 2 – 3 - Finish

Mark 1 – 5 Knot mark

Mark 2 – Watch wake

Mark 3 – TBA

All marks to port.



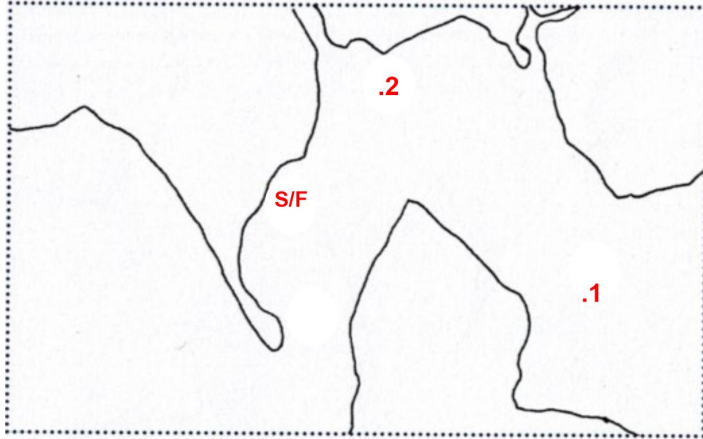
Course 12 (CWB)

Start – 1 – 2 – 1 – 2 – 1 - Finish

Mark 1 – Watch wake

Mark 2 – TBA

All marks to port.

**Course 13 (CWB)**

Start – 2 – 1 - Finish

Mark 1 – Luderick (red marker buoy)

Mark 2 – Tambo Bluff fixed mark

All marks to port



Course 14 (CWB)

Start – 1 - 2 - Finish

Mark 1 – Luderick (red marker buoy)

Mark 2 – Tambo Bluff fixed mark

All marks to starboard

**Course 15 – RAYMOND ISLAND RACE**

Start – A – B – C – D – Finish

All marks to starboard

See Chart 1

Course 16 - GLYC RACE AND RETURN**Outward leg**

Start – A – B – Finish (In front of GLYC)

All marks to starboard

See Chart 1

Homeward leg

Start – C – D - Finish (MYC)

All marks to starboard

See Chart 1

Course 17 - WATTLE POINT RACE

Start – Laid mark at Wattle Point to starboard – Finish

See Chart 2

CHART 1

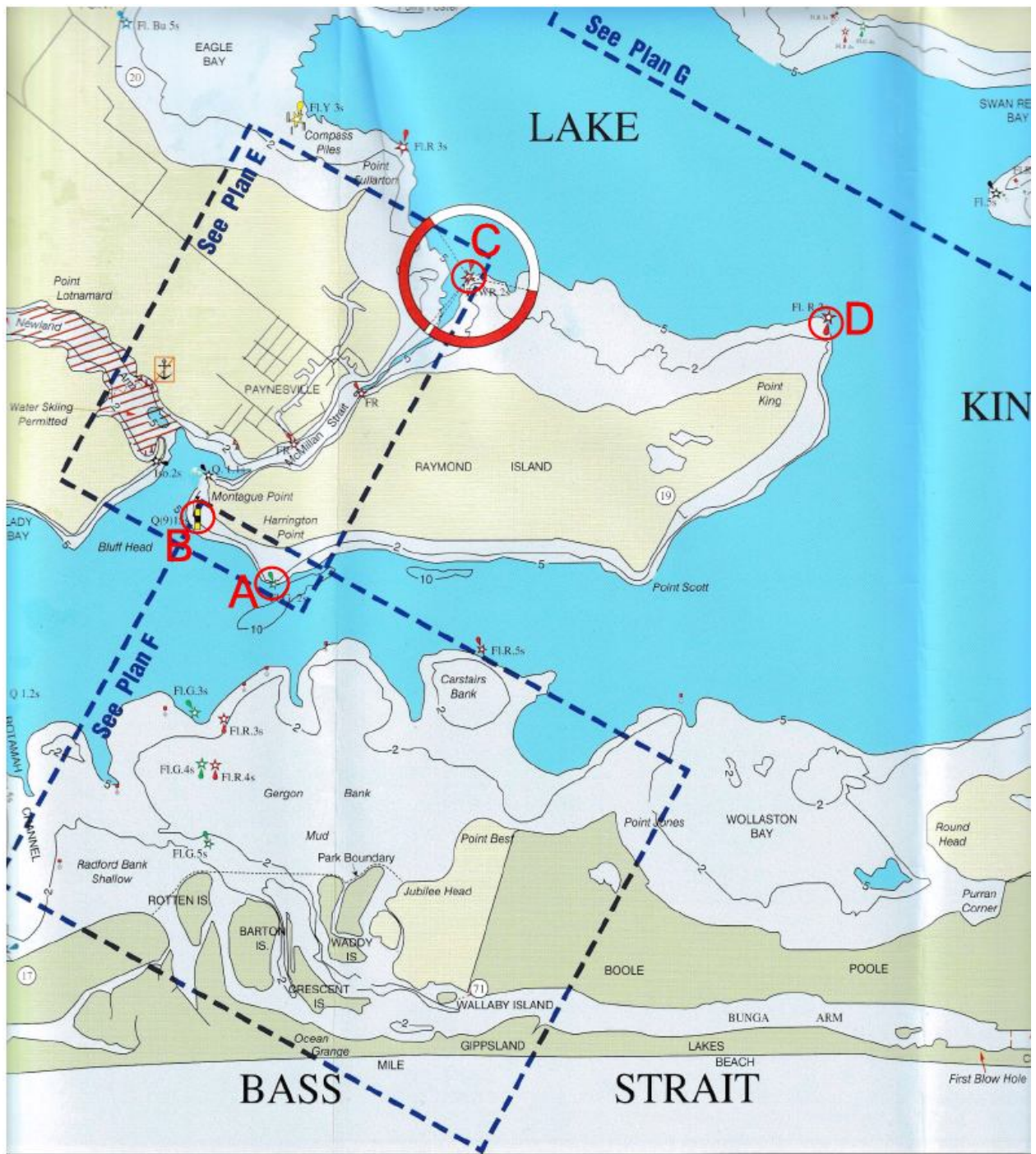


CHART 2

